

HX35AZ/HX40A/HX48AZ

With Stage V / Tier 4 final Engine installed

* Photo may include optional equipment.



Head Office(Sales Office)
11F, GLOBAL R&D CENTER, 477 BUNDANG SUSEO-RO, BUNDANG-GU, SEONGNAM-SI, GYEONGGI-DO, 13553, KOREA



HX35AZ VIDEO

PLEASE CONTACT

2023. NOV

Engine output (HP/kW)

HX35AZ : 24.6(18.5) / HX40A : 39.1(29.1) / HX48AZ : 39.1(29.1)

Machine weight (kg/lbs)

HX35AZ : 3,880(8,550) / HX40A : 4,390(9,680) / HX48AZ : 5,030(11,090)



WHAT'S NEWEST AND BEST

HX35AZ/HX40A/HX48AZ

THE BEST PRODUCTIVITY AND FUEL EFFICIENCY

- EU Stage V / EPA Tier 4 Final Engine
- Auto Engine Idle **NEW**
- Load Sensing Hydraulic System (HX40A/HX48AZ)
- True Zero-tail (HX35AZ/HX48AZ)
- 2way & 4way Aux. Line with Proportional Control **Option**
- Quick Coupler Piping **Option**
- Dozer Blade Floating **NEW**
- Angle Dozer **Option**
- Boom Swing Function
- Long Arm and Heavy Counterweight **Option**

EASY CONTROL AND COMFORTABLE OPERATION

- Digital cluster **NEW**
- Auxiliary Pressure Adjustment
- Centralized Switch Console **NEW**
- Pattern Change Valve with Better Accessibility
- Heating & A/C system (cabin)
- Spacious & Comfortable New Cabin
- Improved Visibility
- Auto-Shift Travel Speed

NEW EXTERIOR DESIGN FOR ROBUSTNESS AND SAFETY

- ROPS / OPG Cabin/Canopy **Option**
- Standard Boom/Arm/Bucket Cylinder Guard **NEW**
- New Designed Attachment for Durability
- Optimized Hydraulic Layout

THE ULTIMATE SAFE ENVIRONMENT

- Safety Belt Warning Alarm
- Emergency Engine Stop Switch
- Travel Alarm
- FOG protective structure **Option**
- LED Work Light & Beacon Lamp **Option**
- Boom and Arm Safety Valves **Option**
- Anti-theft System

SERVICEABILITY AND TELEMATICS

- Hi MATE **NEW** **Option**
- Mobile Fleet App
- Fully Accessible MCV & Engine **NEW**
- 2-Piece Dozer Hose **NEW**
- Standard Tilting Cabin **NEW**



red**dot** winner 2022

* Photo may include optional equipment.



EU Stage V / EPA Tier 4 Final Certified Engine

The new engine meets EU Stage-V, EPA Tier-4 Final emission regulations without DPF and AdBlue, allowing for reduced maintenance costs for after-treatment devices.



THE BEST PRODUCTIVITY AND FUEL EFFICIENCY

HX A Series is equipped with eco-friendly, high-performance engines that meet the EU Stage V / EPA Tier 4 final emission requirements.

Auto Engine Idle

Introducing our auto engine idle feature, which optimizes fuel efficiency by reducing RPM when the equipment is not in use.

Load Sensing Hydraulic System (HX40A/HX48AZ)

HX-A mini excavators (HX40A & HX48AZ) are equipped with a load sensing hydraulic system that provides only the flow and the pressure as required by the connected load. Controlling both the pressure and the flow allows for a significant reduction in losses, improvement of circuit efficiencies, and enhancement of the service life of the system.

Dozer Floating

Dozer floating function enables the excavator blade to glide smoothly over the surface of the ground, ensuring a precise finish without damaging the surface.

Angle Dozer

Angle dozer option allows you to quickly and easily switch between digging, grading, and leveling tasks, saving you time and increasing efficiency on the job site.

True Zero-tail (HX35AZ & HX48AZ)

HX35AZ & HX48AZ eliminates the rear overhang, allowing the excavator to rotate freely within its own footprint. This feature enhances maneuverability and safety while minimizing the risk of damage to surrounding structures.

2way & 4way Aux. Line with Proportional Control

Proportional control switch with better speed control helps operators to enlarge the operation convenience whenever they do time-consuming work. And this function can be switched with pedal valve in cluster setting menu. The roller switch on both joysticks allows to operate multi-function work tools in an efficient way.

Quick Coupler Piping

The HX-A mini excavators are available with a factory-fitted hydraulic line to operate any hydraulic quick coupler. Thus allowing for quick changes of work tools, without having to leave the operator cabin.



* Photo may include optional equipment.



NEW EXTERIOR DESIGN FOR ROBUSTNESS AND SAFETY

The true value of HX A Series lies in its durability and high productivity. The robust upper and lower frame structure can endure external shock and heavy work loads. Attachment performance has been proven through rigorous field testing. No matter how tough the working environment is, you can always rely on the HYUNDAI Excavator HX A Series.



* Photo may include optional equipment



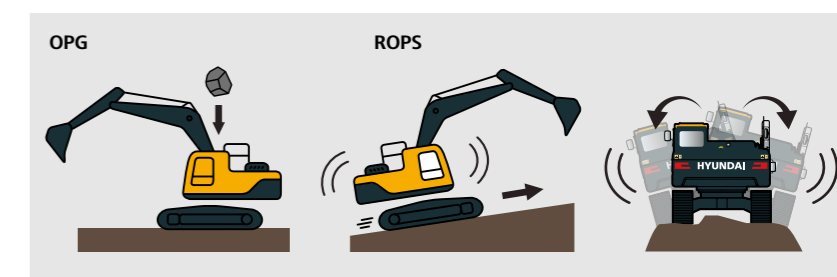
We make the best performance in rough working conditions without any unsureness with trustworthy HX35AZ/HX40A/HX48AZ //

HX A Series is equipment with eco-friendly, high-performance engines that meet the EU Stage V emission requirement. Become a true leader on the ground with HX A Series.

* ROPS Cabin and Canopy

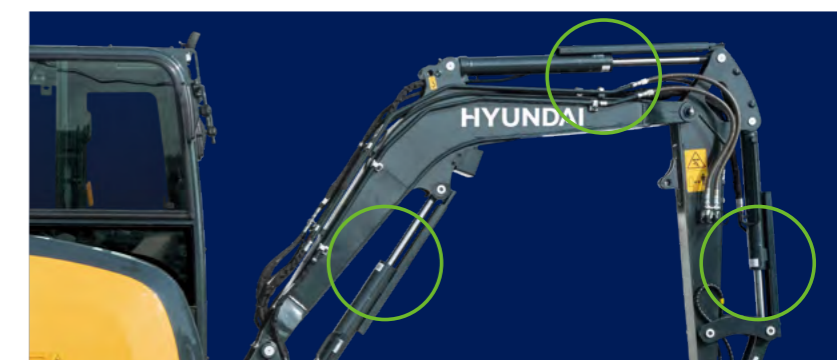
The cabin structure of Hyundai HX A Series is using integrally welded low-stress, high strength steel to meet ROPS and FOG certification.

- ROPS : Roll-Over Protective Structures ISO12117-2
- OPG : Operator Protective Guard, ISO10262 **Option**



Standard Boom/Arm/Bucket Cylinder Guard **NEW**

We have added new cylinder guards to the boom, arm, and bucket of our excavator to provide increased protection for the hydraulic cylinders. These guards effectively shield the cylinders from damage caused by debris and other external factors, reducing the risk of downtime and costly repairs.



Improved Attachment Durability

Our upgraded attachments are designed to withstand the toughest work environments, featuring reinforced steel components and advanced welding techniques to ensure maximum strength and longevity.

Optimized Hydarulic Hose Layout

HX-A Mini excavators now feature an optimized hydraulic hose layout, providing improved maintenance accessibility and efficiency.



Digital Cluster

New 5 inch LCD cluster of HX35AZ/HX40A/HX48AZ allow you to easily control excavator setting - like Aux. flow rate adjustment. Our digital cluster also offers features for component lifecycle management and daiOur console features a centralized layout with intuitive switches and controls that allow you to easily and quickly access all critical functions and operations. ly operation time management.



Centralized Switch Console

HX35AZ/HX40A/HX48AZ's console features a centralized layout with intuitive switches and controls that allow you to easily and quickly access all critical functions and operations.

Proportional Auxiliary Hydraulic System Option

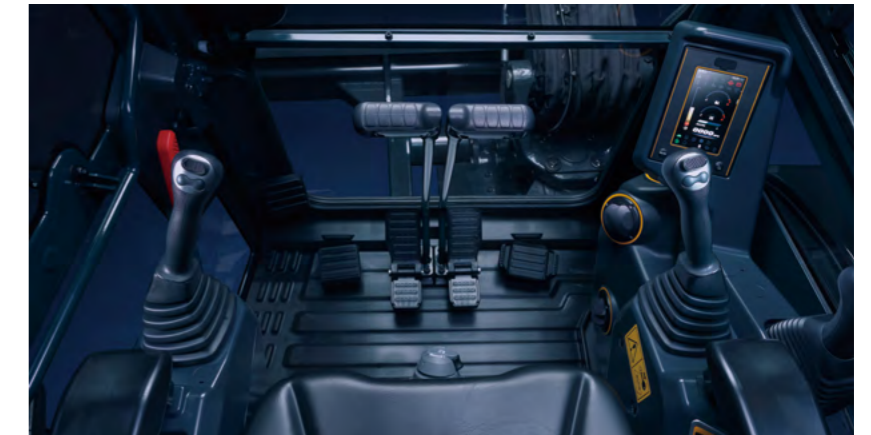
Proportional control switch with better speed control helps operators to enlarge the operation convenience whenever they do time-consuming work. And this function can be switched with pedal valve in cluster setting menu.

Pattern Change Valve

HX-A mini excavators now feature a pattern change valve conveniently located inside the cabin, allowing for easy accessibility and operation.

Improved Visibility

Experience a whole new level of visibility with our latest cabin design. Our engineers have worked tirelessly to enhance the visibility from the cabin, providing you with a wider and more expansive field of view. The new design allows for better sightlines in all directions, giving you a clear and unobstructed view of your surroundings.



Heating & A/C system as standard (with cabin)

The HX-A mini excavators comes ready-equipped with an integrated heating & air-conditioning system, providing a comfortable working environment inside the cabin at all climate conditions.

Auto-Shift Travel Speed

The auto shift travel speed feature on our excavator allows for seamless transitioning between high and low travel speeds, improving overall efficiency and productivity on the job site. This automated feature allows the operator to focus on the task at hand while the machine takes care of speed adjustments.



EASY CONTROL AND COMFORTABLE OPERATION

Introducing our new Spacious & Comfortable Cabin The cabin has been designed with operator comfort and convenience in mind, with optimized ergonomics and advanced features that allow you to work with greater ease and efficiency. With its spacious interior and high-visibility design, our new cabin offers an unparalleled level of comfort and safety, ensuring that you can work for extended periods without fatigue or discomfort.



HX35AZ/HX40A/HX48AZ
with advanced technology
ensures our safety on
a construction site. //

Safety Belt Warning Alarm **NEW**

HX-A mini excavators now feature a safety belt warning alarm to ensure that the operator is properly secured before starting the engine.

Emergency Engine Stop Switch

With just a push of a button, the engine will immediately shut off, ensuring the safety of the operator and those around the machine.

Travel Alarm

The alarm emits a loud and distinct sound to notify nearby workers and pedestrians, reducing the risk of accidents and ensuring compliance with industry safety regulations.

LED Work lamp & Beacon lamp **Option**

HX-A mini excavators are equipped with powerful LED worklights & beacon lamp that provide excellent visibility in low-light conditions, ensuring safe and efficient operation at any time of day or night.

Boom and Arm, Dozer Safety Valves **Option**

The HX35AZ/HX40A/HX48AZ are equipped with safety valves on both the boom and arm, which automatically activate in the event of hydraulic hose damage or loss of pressure to prevent sudden drops.

Anti-theft System

The system includes a password-protected ignition key to prevent the engine from starting without the correct key. Additionally, there is an optional GPS tracker (Hi-Mate) available that allows you to quickly locate the machine in case of theft.



THE ULTIMATE SAFE ENVIRONMENT

The true value of HX A Series lies in its durability. The robust frame structure and the attachments show the real value of HX A Series in tough working environments and promise higher productivity.



* Photo may include optional equipment.



SERVICEABILITY AND TELEMATICS

IoT / ICT / AI-based digital technology.
Creating a smart construction site. Maximizes connectivity, productivity, and safety for successful businesses.



Hi MATE

Option

IT'S CONVENIENT, EASY AND VALUABLE

Hi MATE Hyundai's newly developed remote management system, utilizes GPS-satellite technology to provide customers with the highest level of service and product support available. Hi MATE enables users to remotely evaluate machine performance, access diagnostic information, and verify machine locations at the touch of a button.

WHAT IS BENEFITS



Increase Productivity

It helps you operate machines in efficient. You can check the difference between total engine hours and actual working hours. See how productive your machines are and plan any required cost saving solutions. Hi MATE offers working information such as working / idling hours, fuel consumption and rate.



Convenient and Easy Monitoring

There is nothing much to do to monitor your machines. Just log on to the Hi MATE website or mobile application. Hi MATE allows you to watch your machines whenever and wherever you are.



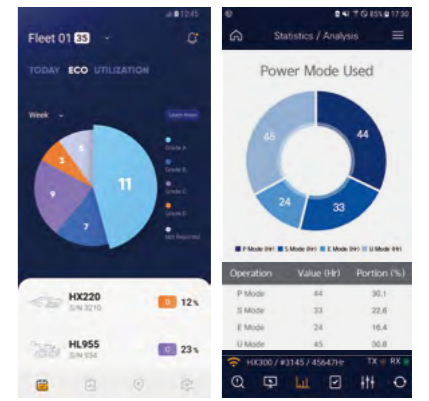
Security

Protect your machines from theft or unauthorized usage with Hi MATE. If the machine moves out of the Geo-fence boundary, you will get alerts.

Mobile Fleet App. Option

The new Mobile App is optimized to fleet management. It provides productivity, health insights based on telematics technology and enables fleet owner just focus on most wanted equipment in view of economical usage, utilization, fault codes and maintenance.

The new Mobile App sorts equipment in order of eco-index, utilization-index and fault code level automatically so that urgent equipment pops up automatically.



Hi MATE Fleet App HCE-DT AIR App

Fully Accessible MCV & Engine NEW

The cowl, which is a full open type, allows for easy access to both the MCV and engine. In addition, the layout of the MCV and engine has been optimized for better serviceability.



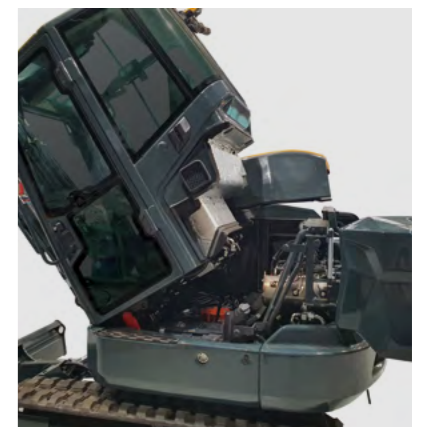
2-Piece Dozer Hose NEW

HX-A mini excavator's dozer is designed with a hydraulic hose that is a 2-piece type, providing easy and convenient maintenance. This design allows for easy replacement of individual hoses in case of damage, reducing maintenance time and costs.



Standard Tilting Cabin NEW

Our excavator is equipped with a tilting cabin, allowing for easy access to components like the swing motor. This innovative design improves serviceability and reduces downtime, as maintenance tasks can be completed quickly and efficiently.



* Photo may include optional equipment.



red dot winner 2022



THREE MINI EXCAVATORS MADE BY HD HYUNDAI CONSTRUCTION EQUIPMENT WIN THE MAIN PRIZE AT THE RED DOT DESIGN AWARDS HELD IN GERMANY

HD Hyundai Construction Equipment was awarded the main prize at the Red Dot Design Award 2022, the Oscars of the design industry.

HD Hyundai Construction Equipment announced that at this year's Red Dot Design Award, it had received the 'Winner' prize in the product design category for three models in its next-generation mini excavators series (HX35AZ, HX40A, HX48AZ).

Red Dot Design Award is a prize competition organized by Design Zentrum Nordrhein Westfalen of Germany. Along with the iF Design Awards of Germany, and IDEA of the U.S., this event is considered to be one of the top 3 design awards in the world.

A design depicting 'tiger eyes' that uses the dynamic and powerful image of a tiger as its motif was adopted for the mini excavators that won the award at the event. The vehicles were praised for their eco-friendly features and convenience of operability.

Hyundai Construction Equipment developed the mini excavators to meet the 'Stage V' standard on gas emissions. Thus, the company minimizes the release of environmentally hazardous materials during the painting stage of the manufacturing process by expanding the use of single hue graphics. Also, through the ergonomic placement of the seats and air conditioning, the fatigue felt by the operator was diminished, while the performance efficiency is improved with the adoption of a full glass door in the cabin design.

SPECIFICATIONS

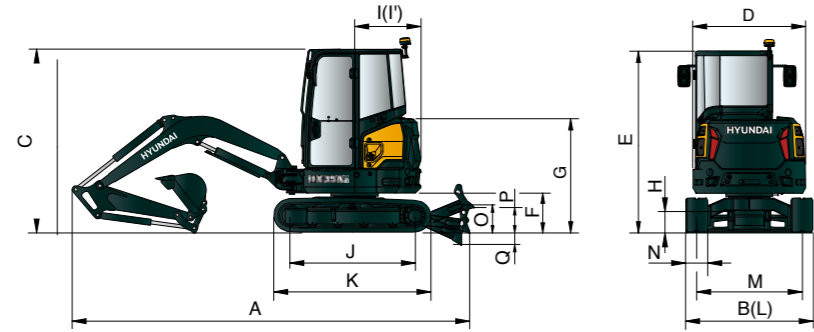
Unit : mm (ft-in)

SPECIFICATIONS				
Maker / Model		HX35AZ	HX40A	HX48AZ
Operating weight	kg(lbs)	3880(8550)	4390(9680)	5030(11090)
ENGINE				
Manufacturer		Kubota	Yanmar	Yanmar
Model		D1703	4TNV88C	4TNV88C
Type		Vertical, water cooled 4-cycle DI diesel engine	4 cycle, Inline, Water-Cooled Diesel	4 cycle, Inline, Water-Cooled Diesel
Emission standard		Tier 4 Final / Stage V	Tier 4 Final / Stage V	Tier 4 Final / Stage V
Gross	PS(kW)/rpm	25.2(18.5) / 2,300	39.6(29.1) / 2,200	39.6(29.1) / 2,200
Net	PS(kW)/rpm	24.2(17.8) / 2,300	38.2(28.1) / 2,200	38.2(28.1) / 2,200
Peak torque	N · m(lb · ft)	97.4(72.0)	144.9(106.9)	144.9(106.9)
No. of cylinder		3	4	4
Bore x Stroke		mm(in.) 87.0(3.43") x 92.4(3.64")	88(3.64") x 90(3.54")	88(3.64") x 90(3.54")
Displacement		cc(in ³) 1647(101.0)	2190(133.6)	2190(133.6)
HYDRAULIC SYSTEM				
Pump type		Variable displacement tandem axis piston pumps	Load sensing system	Load sensing system
Max. pressure	kgf/cm ² (psi)	230(3,280)	254(3,613)	254(3,613)
Max. flow rate	l(gal)/min	2 x 37.4(9.7) + 23.1(6.1)	99.0(26.2)	121((31.9)
Aux. flow rate (2way)	l(gal)/min	60.5(16.0)	80.0(21.1)	80.0(21.1)
Aux. flow rate (4way)	l(gal)/min	60.5(16.0)	40.0(10.1)	40.0(10.1)
Fuel tank capacity		l(gal) 46.8(12.4)	66.8(17.6)	66.8(17.6)
Hydraulic capacity (tank/system)		l(gal) 36(9.5) / 63(16.6)	44(11.6) / 78(20.6)	44(11.6) / 83(21.9)
Bucket digging force (ISO)		kgf(lbf) 3,281(7,232)	4,461(9,835)	3,814(8,409)
Arm digging force (ISO)		kgf(lbf) 2,025(4,465)	2,060(4,541)	2,431(5,359)
Travel speed (high/low)		km(mile)/h 2.6(1.6)/4.4(2.7)	3.3(2.1)/4.9(3.0)	2.8(1.7)/4.4(2.7)
Traction force		kg(lb) 3039(6700)	3013(6640)	4650(10250)
Swing speed		rpm 9.4	9.9	10.1
Boom length		mm(ft.) 2,400(7' 10")	2,600(8' 6")	2,800(9' 2")
Arm length		mm(ft.) 1,300(4'3") / 1,600(5' 3")	1,600(5' 3")	1,400(4' 3")
Bucket capacity, std. SAE		m ³ (yd ³) 0.11(0.14)	0.11(0.14)	0.15(0.20)
Bucket width (without / with sidecutter)		mm(in.) 500(19.7") / 610(24.0")	500(19.7") / 610(24.0")	490(19.3") / 610(24.0")
Boom swing angle		75/50	75/55	70/60
Rubber track width		mm(ft.) 300(1'0")	350(1'2")	400(1'4")
Ground pressure		kgf/cm ² (psi) 0.36(5.09)	0.34(4.86)	0.34(4.69)
Noise level				
LpA / LwA (2000/14/EC)	dB	71.5 / 93	71.5 / 94	71.4 / 95

* All equipment dimension is based on cabin, standard boom/arm and counterweight.

WORKING RANGE & DIMENSION

HX35AZ/HX40A/HX48AZ



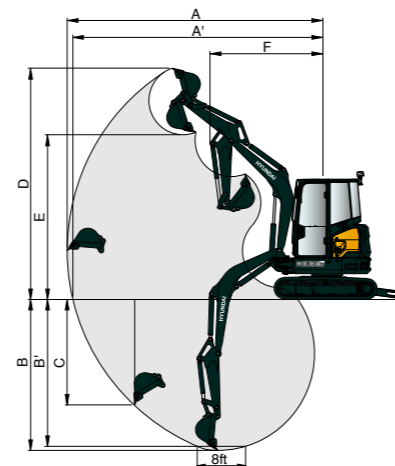
Unit : mm (ft-in)

DIMENSIONS	HX35AZ	HX40A	HX48AZ
Operating weight	3,880 (8,550)	4,390 (9,680)	5,030 (11,090)
A Overall length	4,783 (15' 8")	5,425 (17' 10")	5,493 (18' 0")
B Overall width	1,740 (5' 9")	1,740 (5' 9")	2,000 (6' 7")
C Overall height	2,505 (8' 3")	2,525 (8' 3")	2,580 (8' 6")
D Overall width of upperstructure	1,540 (5' 1")	1,700 (5' 1")	1,850 (6' 1")
E Overall height of cab	2,505 (8' 3")	2,525 (8' 3")	2,580 (8' 6")
F Ground clearance of counterweight	525 (1' 9")	555 (1' 10")	608 (2' 0")
G Overall height of engine hood	1,545 (5' 1")	1,550 (5' 1")	1,605 (5' 3")
H Minimum ground clearance	167 (0' 7")	185 (0' 7")	215 (0' 8")
I Rear-end distance	900 (2' 11")	1,300 (4' 3")	1,000 (3' 3")
I' Rear-end swing radius	900 (2' 11")	1,300 (4' 3")	1,000 (3' 3")
J Distance between tumblers	1,690 (5' 7")	1,720 (5' 8")	2,000 (6' 7")
K Undercarriage length (without grouser)	2,128 (7' 0")	2,185 (7' 2")	2,214 (7' 3")
L Undercarriage width	1,740 (5' 9")	1,740 (5' 9")	2,000 (6' 7")
M Track gauge	1,440 (4' 9")	1,390 (4' 7")	1,600 (5' 3")
N Track shoe width, standard	300 (1' 0")	350 (1' 2")	400 (1' 4")
O Height of blade	371 (1' 3")	380 (1' 3")	350 (1' 2")
P Ground clearance of blade up	383 (1' 3")	400 (1' 4")	410 (1' 4")
Q Depth of blade down	447 (1' 6")	480 (1' 7")	580 (1' 11")

* All equipment dimension is based on cabin, standard boom/arm and counterweight.

WORKING RANGE	HX35AZ	HX40A	HX48AZ
A Max digging reach	5,290 (17' 4")	5,525 (18' 2")	5,990 (19' 8")
A' Max digging reach on ground	5,170 (17' 0")	5,390 (17' 8")	5,850 (19' 2")
B Max digging depth	2,980 (9' 9")	3,420 (11' 3")	3,500 (11' 6")
B' Max digging depth (8 ft level)	2,500 (8' 2")	3,010 (9' 11")	3,095 (10' 2")
C Max vertical wall digging depth	2,250 (7' 5")	2,620 (8' 7")	2,650 (8' 8")
D Max digging height	4,820 (15' 10")	5,360 (17' 7")	5,570 (18' 3")
E Max dumping height	3,415 (11' 2")	3,945 (12' 11")	3,860 (12' 8")
F Min swing radius	2,350 (7' 9")	2,260 (7' 5")	2,540 (8' 4")

* All equipment dimension is based on cabin, standard boom/arm and counterweight.



LIFTING CAPACITY

Rating over-front Rating over-side or 360 degree

HX35AZ

2.4m (7' 10") boom, 1.3m (4' 3") arm equipped with 300mm (1") rubber track, dozer down position.

Lift-point height (m/ft)	Lift-point radius						At max. reach			
	2.0m (6.6ft)		3.0m (9.8ft)		4.0m (13.1ft)		Capacity		Reach m (ft)	
	Front	Side	Front	Side	Front	Side	Front	Side		
4.0m 13.1ft	kg lb							*800 *1,760	*800 *1,760	3.06 (10.0)
3.5m 11.5ft	kg lb							*750 *1,650	610 1,340	3.63 (11.9)
3.0m 9.8ft	kg lb					*730 *1,610	510 1,120	*730 *1,610	500 1,100	4.03 (13.2)
2.5m 8.2ft	kg lb					*740 *1,630	510 1,120	*730 *1,610	440 970	4.30 (14.1)
2.0m 6.6ft	kg lb			*950 *2,090	810 1,790	*770 *1,700	500 1,100	*730 *1,610	410 900	4.48 (14.7)
1.5m 4.9ft	kg lb			*1,120 *2,470	780 1,720	*820 *1,810	490 1,080	*740 *1,630	390 860	4.58 (15.0)
1.0m 3.3ft	kg lb			*1,280 *2,820	750 1,650	*870 *1,920	480 1,060	*750 *1,650	380 840	4.62 (15.1)
0.5m 1.6ft	kg lb			*1,400 *3,090	730 1,610	*910 *2,010	470 1,040	*760 *1,680	380 840	4.58 (15.0)
0.0m 0.0ft	kg lb	*1,350 *2,980	*1,350 *2,980	*1,430 *3,150	710 1,570	*920 *2,030	460 1,010	*770 *1,700	390 860	4.47 (14.7)
-0.5m -1.6ft	kg lb	*1,910 *4,210	1,390 3,060	*1,400 *3,090	710 1,570	*890 *1,960	460 1,010	*780 *1,720	410 900	4.28 (14.1)
-1.0m -3.3ft	kg lb	*2,250 *4,960	1,400 3,090	*1,290 *2,840	710 1,570	*780 *1,720	460 1,010	*780 *1,720	460 1,010	4.01 (13.1)
-1.5m -4.9ft	kg lb	*1,840 *4,060	1,410 3,110	*1,090 *2,400	720 1,590			*770 *1,700	540 1,190	3.60 (11.8)
-2.0m -6.6ft	kg lb	*1,240 *2,730	*1,240 *2,730	*710 *1,570	*710 *1,570			*700 *1,540	*700 *1,540	3.01 (9.9)

HX40A

2.6m (8' 6") boom, 1.3m (4' 3") arm equipped with 350mm (1' 2"), rubber track, dozer down position.

Lift-point height (m/ft)	Lift-point radius						At max. reach					
	1.0m (3.3ft)		2.0m (6.6ft)		3.0m (9.8ft)		4.0m (13.1ft)		Capacity		Reach m (ft)	
	Front	Side	Front	Side	Front	Side	Front	Side	Front	Side		
4.0m 13.1ft	kg lb									*1,000 *2,200	900 1,980	3.62 (11.9)
3.0m 9.8ft	kg lb						*950 *2,090	780 1,720	*930 *2,050	670 1,480	4.35 (14.3)	
2.0m 6.6ft	kg lb					*1,220 *2,690	1,180 2,600	*1,040 *2,290	760 1,680	*910 *2,010	590 1,300	4.72 (15.5)
1.0m 3.3ft	kg lb					*1,630 *3,590	1,110 2,450	*1,190 *2,620	730 1,610	*960 *2,120	560 1,230	4.81 (15.8)
0.0m 0.0ft	kg lb			*1,480 *3,260	*1,480 *3,260	*1,860 *4,100	1,060 2,340	*1,280 *2,820	710 1,570	*1,050 *2,310	580 1,280	4.66 (15.3)
-1.0m -3.3ft	kg lb	*1,680 *3,700	*1,680 *3,700	*2,800 *6,170	1,970 4,340	*1,800 *3,970	1,050 2,310	*1,200 *2,650	710 1,570	*1,070 *2,360	660 1,460	4.22 (13.8)
-2.0m -6.6ft	kg lb	*3,070 *6,770	*3,070 *6,770	*2,200 *4,850	2,010 4,430	*1,340 *2,950	1,070 2,360			*1,050 *2,310	920 2,030	3.37 (11.1)

HX48AZ

2.8m (9' 2") boom, 1.4m (4' 7") arm equipped with 400mm (1' 4"), rubber track, dozer down position.

Lift-point height (m/ft)	Lift-point radius								At max. reach			
	2.0m (6.6ft)		3.0m (9.8ft)		4.0m (13.1ft)		5.0m (16.4ft)		Capacity		Reach m (ft)	
	Front	Side	Front	Side	Front	Side	Front	Side	Front	Side		
4.0m 13.1ft	kg lb					*870 *1,920	790 1,740			*870 *1,920	730 1,610	4.17 (13.7)
3.0m 9.8ft	kg lb					*880 *1,940	790 1,740			*810 *1,790	540 1,190	4.84 (15.9)
2.0m 6.6ft	kg lb			*1,380 *3,040	1,220 2,690	*1,070 *2,360	750 1,650	*950 *2,090	500 1,100	*830 *1,830	470 1,040	5.18 (17.0)
1.0m 3.3ft	kg lb			*2,000 *4,410	1,100 2,430	*1,300 *2,870	700 1,540	*1,030 *2,270	480 1,060	*900 *1,980	440 970	5.26 (17.3)
0.0m 0.0ft	kg lb	*1,190 *2,620	*1,190 *2,620	*2,290 *5,050	1,040 2,290	*1,460 *3,220	670 1,480	*1,080 *2,380	470 1,040	*1,040 *2,290	450 990	5.11 (16.8)
-1.0m -3.3ft	kg lb	*2,370 *5,220	2,140 4,720	*2,220 *4,890	1,030 2,270	*1,450 *3,200	660 1,460			*1,110 *2,450	520 1,150	4.68 (15.4)
-2.0m -6.6ft	kg lb	*3,080 *6,790	2,200 4,850	*1,800 *3,970	1,060 2,340					*1,170 *2,580	710 1,570	3.87 (12.7)

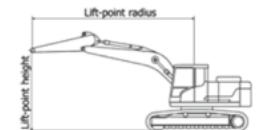
[1] Lifting capacity are based on ISO 10567.

[2] Lifting capacity of HX Series does not exceed 75% of tipping load with the machine on firm, level ground or 87% of full hydraulic capacity.

[3] The Lift-point is bucket pivot mounting pin on the arm (without bucket mass).

[4] (*) indicates load limited by hydraulic capacity.

Unit : mm (ft-in)



STANDARD / OPTION

● : Standard / ○ : Option

ENGINE			
Model	HX 35AZ	HX 40A	HX 48AZ
Mechanical controlled Kubota engine	●		
Electrical controlled Yanmar engine		●	●
Double-element air filter	●	●	●
Auto ideling system	●	●	●
Water seperator with filter	●	●	●
Electric fuel filler pump		○	○
HYDRAULIC SYSTEM			
Open center hydraulic system	●		
Load-sensing hydraulic system		●	●
Two-speed travel with auto-shift	●	●	●
Floating dozer blade	●	●	●
Angle dozer blade	○	○	○
Pressure accumulator	●	●	●
Proportional Aux. control	○	●	●
1 way Aux. hydraulic line for breaker	●		
2 way Aux. hydraulic line for grapple	○	●	●
4 way Aux. hydraulic line for rotating	○	○	○
Divert valve for 2 way hydraulic	○	●	●
Adjustable Aux. flow on cluster	●	●	●
CABIN			
ROPS (Roll-over Protective structure, ISO3471)	●	●	●
OPG (Operator Protective Guard) Level 1	○	○	○
FOG Guard	○	○	○
Adjustable Mechanical Suspension Seat	●	●	●
Retractable seatbelt with warning alarm	●	●	●
Heating & Air Conditioning	●	●	●
Travel levers with foot pedals	●	●	●
Emergency hammer for exit	●	●	●
Power-assisted front window	●	●	●
Rear view camera		○	○
Travel alarm	●	●	●
LED beacon lamp	○	○	○
5" Digital cluster with IP68 water & dust proof	●	●	●
Radio with USB	●	●	●
12V power socket	●	●	●
Side & Rear Mirrors	●	●	●
Cup holder	●	●	●
Pattern change valve inside cabin	●	●	●
Horn	●	●	●
CANOPY			
ROPS (Roll-over Protective structure, ISO3471)	●	●	●
Adjustable Mechanical Suspension Seat	●	●	●
Retractable seatbelt with warning alarm	●	●	●
Travel levers with foot pedals	●	●	●
5" Digital cluster with IP68 water & dust proof	●	●	●
12V power socket	●	●	●
Side Mirror	●	●	●
Cup holder	●	●	●
Horn	●	●	●

WORKING EQUIPMENT			
Model	HX 35AZ	HX 40A	HX 48AZ
Zero-tail	●		●
Boom swing function	●	●	●
Arm with thumb bracket	○	○	○
Long arm option	○	○	
Hyundai quick coupler	○	○	○
Quick coupler piping	○	○	○
Additional counter weight option	○		○
Safety valves for Boom/Arm/Dozer	○	○	○
Overload warning alarm	○	○	○
Travel & Swing motor with discs brake	●	●	●
1 LED work light on boom	●	●	●
2 LED work lights on cabin	○	○	○
UNDERCARRIAGE			
Rubber track	●	●	●
Steel track	○	○	○
Interchagability bewteen rubber and steel track	●	●	●
Hi MATE			
	○	○	○

* Standard and optional equipment may vary. Contact your Hyundai dealer for more information.
 The machine may vary according to International standards.
 * The photos may include attachments and optional equipment that are not available in your area.
 * Materials and specifications are subject to change without advance notice.
 * All imperial measurements rounded off to the nearest pound or inch.

MEMO